



# THE MEDICAL PROFESSION THROUGH THE LENS OF HUMAN FLOURISHING

## Social Justice, Health Equity and Human Flourishing: Are We All Included?

ONLINE | TUESDAY, AUGUST 3 | 4-5 PM CT

### LEARNING OBJECTIVES

- Explore the responsibilities that all health professionals have to **address the root causes** of health inequity.
- Advocate for **building a strong relationship** between health, health equity and the opportunity for individuals to flourish.
- Discuss strategies aimed to **dismantle structural barriers** to human flourishing that exist across diverse populations.

See pgs. 3-4 for Continuing Education info and registration instructions

### ABOUT THE KNN

This discussion series is presented by the Kern National Network for Caring & Character in Medicine (KNN) through an investment from the Kern Family Trust and Kern Family Foundation. The mission of the KNN is to promote human flourishing through the profession of medicine. Founding member schools include:

- Dell Medical School at The University of Texas Austin
- Geisel School of Medicine at Dartmouth
- Mayo Clinic Alix School of Medicine
- Medical College of Wisconsin Medical School
- University of California San Francisco School of Medicine
- University of Wisconsin School of Medicine and Public Health
- Vanderbilt University School of Medicine

### Featuring:

**Pedro “Joe” Greer Jr., MD, FACP, FAGC**

Professor and Dean, College of Medicine  
Roseman University of Health Sciences



**John Lowe, RN, PhD, FAAN**

Joseph Blades Centennial Memorial Professor  
UT-Austin School of Nursing  
Faculty Affiliate, Native American & Indigenous Studies  
UT-Austin College of Liberal Arts



**Carla Pugh, MD, PhD, FACS**

Professor of Surgery  
Stanford University School of Medicine  
Director, T.E.C.I. Center  
Stanford Medicine



### Moderator:

**Chris Stawski, PhD**

Senior Fellow, Kern Family Foundation



**Register Today**



**KERN NATIONAL NETWORK**  
FOR CARING & CHARACTER IN MEDICINE

# FEATURED SPEAKERS



**Pedro "Joe" Greer Jr., MD, FACP, FAGC**  
Professor and Dean, College of Medicine  
Roseman University of Health Sciences

Following service as a professor, chair and associate dean at Florida International University's college of medicine, Pedro "Joe" Greer Jr. joined Roseman University of Health Sciences to establish an innovative medical school that will align students, educators and the community in designing an inclusive, collaborative environment.

Dr. Greer has long been an advocate for health equity, engaging communities to create effective health and social policies and accessible healthcare systems. He spearheaded the nationally recognized NeighborhoodHELP™ program to prepare health professions students to address social determinants of health.

He has received numerous recognitions, including being honored as a MacArthur Foundation "Genius Grant" Fellow and receiving the Presidential Medal of Freedom. He previously served as chair for the Hispanic Heritage Awards Foundation and currently serves as a trustee at the RAND Corporation.

John Lowe joined The University of Texas at Austin School of Nursing in fall of 2020 as the Joseph Blades Centennial Memorial Professor, having come from Florida State University, where he established and served as director of the Center for Indigenous Nursing Research for Health Equity.

Dr. Lowe has developed and studied interventions for the prevention and reduction of substance use and other risk behaviors among Native American and Indigenous youth and young adults. These studies and other health programs are guided by models that Dr. Lowe developed, which include the Cherokee Self-Reliance, Native Self-Reliance, and Native-Reliance models.

Dr. Lowe also developed the first manualized, evidence-based Talking Circle intervention to reduce substance use and other risk behaviors among Native American and Indigenous people. He was the first Native American man to be inducted as a fellow in the American Academy of Nursing.



**John Lowe, RN, PhD, FAAN**  
Joseph Blades Centennial Memorial Professor  
UT-Austin School of Nursing  
Faculty Affiliate, Native American & Indigenous Studies  
UT-Austin College of Liberal Arts



**Carla Pugh, MD, PhD, FACS**  
Professor of Surgery  
Stanford University School of Medicine  
Director, T.E.C.I Center  
Stanford Medicine

Carla Pugh obtained her undergraduate degree in neurobiology at UC Berkeley and her medical degree at Howard University School of Medicine. Upon completion of her surgical training, she went to Stanford University and became the first surgeon in the United States to obtain a PhD in education.

Her research involves the use of simulation and advanced engineering technologies to develop new approaches for assessing/defining mastery in clinical procedural skills.

In 2011, Dr. Pugh received the Presidential Early Career Award for Scientists and Engineers from President Barack Obama. In 2017, she was noted to be one of only 10 African American female surgeons with NIH grant funding. Currently, Dr. Pugh is president-elect of the Society of Black Academic Surgeons and co-chair for Stanford University's Race in STEM Cluster Hire.

Chris Stawski is a senior fellow at the Kern Family Foundation. He works to build relational networks and co-develop strategic directions to integrate the Foundation's focus areas in character, entrepreneurial mindset and creating value for others. He is also Affiliate Assistant Professor at the Kern Institute for the Transformation of Medical Education at the Medical College of Wisconsin, where he works to integrate character into medical education.

He works with opinion-leading experts, emerging talent and colleagues in philanthropy, nonprofit organizations and academia who have the potential to advance breakthrough ideas to transform culture, knowledge and society.



**Chris Stawski, PhD**  
Senior Fellow, Kern Family Foundation



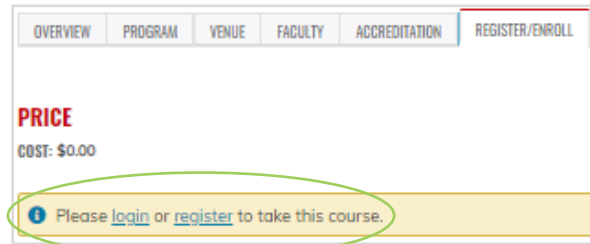
# REGISTRATION INSTRUCTIONS

**Thank you to KNN partner school UW-Madison for hosting registration!**

**Please note:** Registration is a two-part process. You will need to sign in or create an account with UW-Madison, then select "Begin" to start your registration.

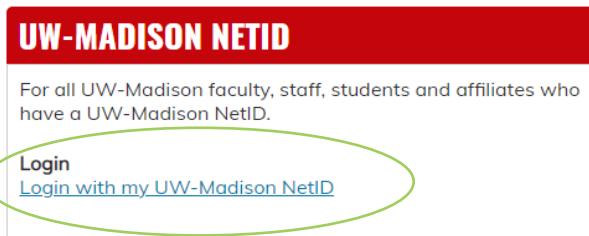
1) Click [here](#) to register and select the August event from the list of sessions.

2) Under the "Register/Enroll" tab, select "login" or "register."

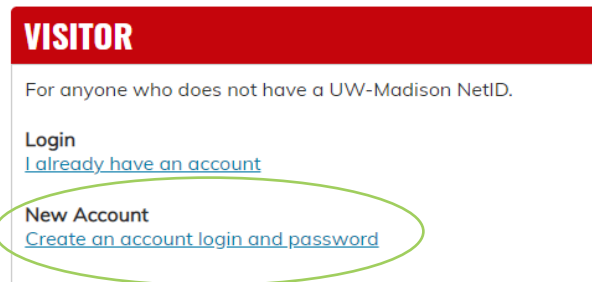


3) Choose the appropriate option:

**If you have a UW-Madison NetID:**  
Select "Login with my UW-Madison NetID"



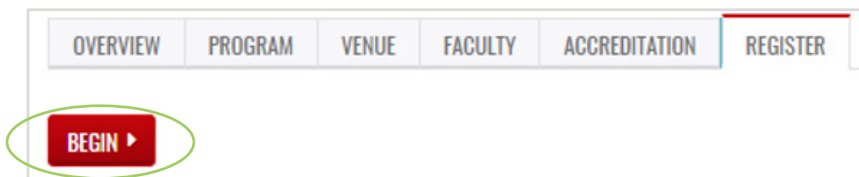
**If you do not have a UW-Madison Net ID:**  
Select "Create an account login and password"



4) Follow any prompts to complete/update your profile information to create an account.

Questions on setting up your profile? Please see [this FAQ](#) from UW-Madison.

5) Once your account is created, select "Begin" to register for the event. You will receive an email confirmation to indicate your registration has been processed. If you do not, please contact us.



**You must select "Begin" to register successfully for the event**

Questions on registration? Please contact [help@icep.wisc.edu](mailto:help@icep.wisc.edu)



# CONTINUING EDUCATION

## ACCREDITATION STATEMENT



JOINTLY ACCREDITED PROVIDER™  
INTERPROFESSIONAL CONTINUING EDUCATION

In support of improving patient care, this activity has been planned and implemented by the University of Wisconsin–Madison Interprofessional Continuing Education Partnership (ICEP) and the Kern National Network for Caring & Character in Medicine, Medical College of Wisconsin. The University of Wisconsin–Madison ICEP is jointly accredited by the Accreditation Council for Continuing Medical Education (ACCME), the Accreditation Council for Pharmacy Education (ACPE), and the American Nurses Credentialing Center (ANCC), to provide continuing education for the healthcare team.

## CREDIT DESIGNATION STATEMENTS

### ACCREDITATION COUNCIL FOR PHARMACY EDUCATION (ACPE)

The University of Wisconsin–Madison ICEP designates this knowledge-based activity for a maximum of 1.0 hour/0.1 CEUs of CPE credit. Credit will be provided to NABP CPE Monitor within 45 days after the activity completion.

Universal Activity Number (UAN): JA0000358-9999-21-109-L04-P

### AMERICAN MEDICAL ASSOCIATION (AMA)

The University of Wisconsin–Madison ICEP designates this live activity for a maximum of 1.0 *AMA PRA Category 1 Credit™*. Physicians should claim only the credit commensurate with the extent of their participation in the activity.

### AMERICAN NURSES CREDENTIALING CENTER (ANCC)

The University of Wisconsin–Madison ICEP designates this live activity for a maximum of 1.0 ANCC contact hour.

Iowa Board of Nursing accepts ANCC contact hours for [nursing continuing education requirements](#).

## CONTINUING EDUCATION UNITS

The University of Wisconsin–Madison ICEP, as a member of the University Professional & Continuing Education Association (UPCEA), authorizes this program for 0.1 continuing education units (CEUs) or 1.0 hour.

## SAVE THE DATE

**Civic Responsibility: Medicine and Democracy**

Tuesday, October 26, 2021 4 PM CT

Questions? Email us at [knn@mcw.edu](mailto:knn@mcw.edu)

*Thank you to our partners at Aurora WDC for production assistance.*



**KERN NATIONAL NETWORK**  
FOR CARING & CHARACTER IN MEDICINE