

KNN DISCUSSION SERIES

Human Flourishing 2030

Flourishing in the Learning Environment

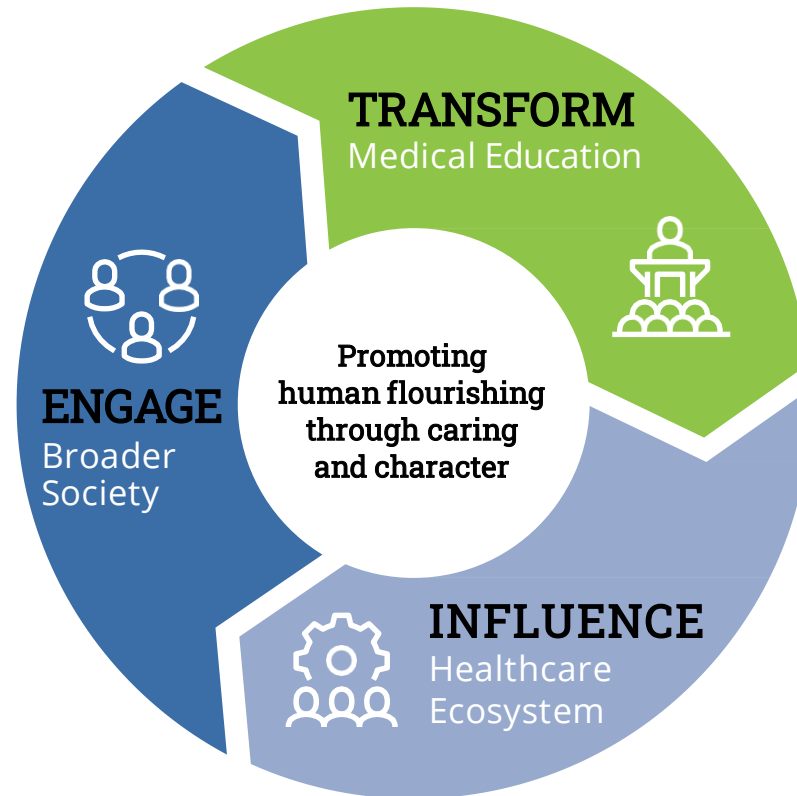


KERN NATIONAL NETWORK
FOR CARING & CHARACTER IN MEDICINE

KNN Overarching Strategic Framework

FIVE NATIONAL STRATEGIES

- ➔ Create Partnerships Across Health and Social Ecosystems
- ➔ Develop Future Leaders
- ➔ Bridge Across Differences
- ➔ Conduct and Disseminate Scholarship
- ➔ Effect Change in Systems and Policies



INNOVATIONS WITHIN AND COLLABORATIONS ACROSS MEDICAL SCHOOLS

Advance culture and systems change to integrate caring and character

- ➔ Empower Learners
- ➔ Develop Faculty Leaders
- ➔ Transform Learning Environments

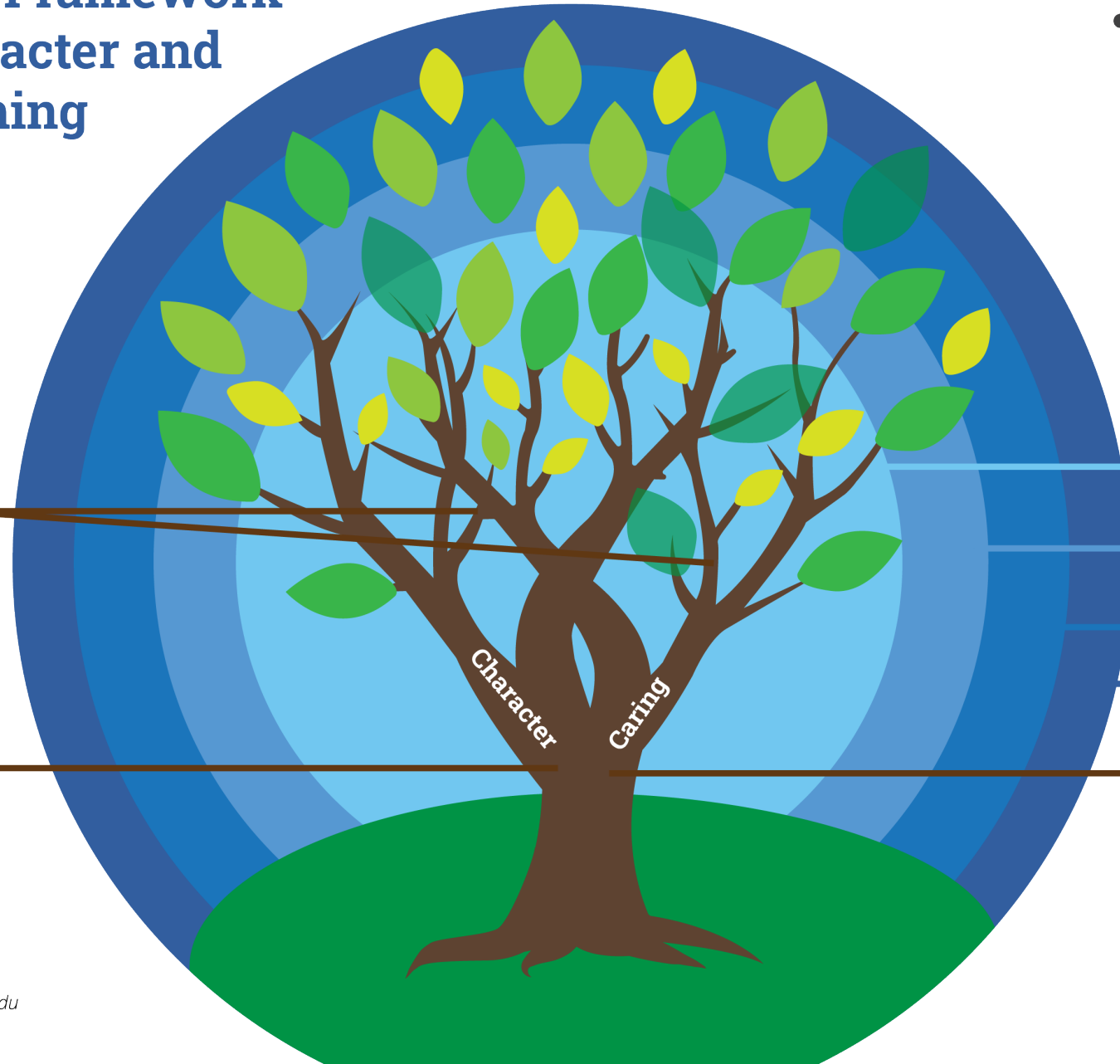
The Kern National Network Founding Members



KNN Integrated Framework for Caring, Character and Human Flourishing

Rev. 5/15/22

Corresponding references available in appendix



Practical Wisdom

Using acquired experience to discern the right way to do the right thing in a particular circumstance, with a particular person, at a particular time.²

Character

A constellation of characteristics—moral, civic, intellectual and performance—formed over time and manifest in dispositions and practices.³

Human Flourishing

Human flourishing refers to a wholeness—of being and doing, of realizing one’s potential and helping others do the same. It can be measured across the domains of happiness; life satisfaction; physical and mental health; meaning and relationships, and is most commonly achieved through pathways of family, work, education and spiritual community.¹

Individuals

Medical and Other Health Professions Education

Health Systems and Other Practice Environments

Society

Caring

A blend of practices, dispositions and motivations—attentiveness, responsibility, competency, responsiveness and engagement/citizenship—all aimed at ensuring that individuals and populations grow, develop and flourish as best they can.⁴

Flourishing in the Learning Environment

SESSION FOCUS AREAS



- Discuss strategies to infuse human flourishing into learning experiences.
- Explore how faculty can integrate human flourishing practices into curriculum and their philosophies of education.
- Explain how learners can be agents and beneficiaries of human flourishing at their schools.

Today's Speakers

Moderator

**Catherine R. Lucey,
MD, MACP**

Exec. Vice Dean and Vice Dean for Education, the Molina Family Presidential Chair in Medical Education, Professor of Medicine, UCSF School of Medicine
KNN Founding Board Member



Michelle Guy, MD

Clinical Professor of Medicine and Director of Diversity for GME, UCSF



Stuart Slavin, MD, MEd

Senior Scholar for Well-Being at the Accreditation Council for Graduate Medical Education



Saba Anwer

2nd Year Medical Student
Medical College of Wisconsin

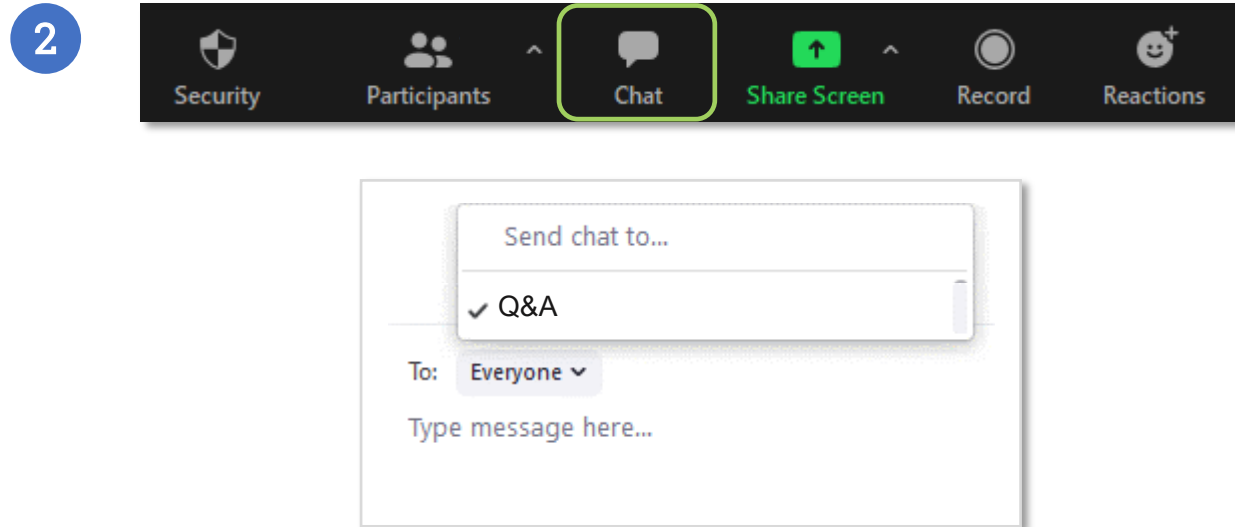
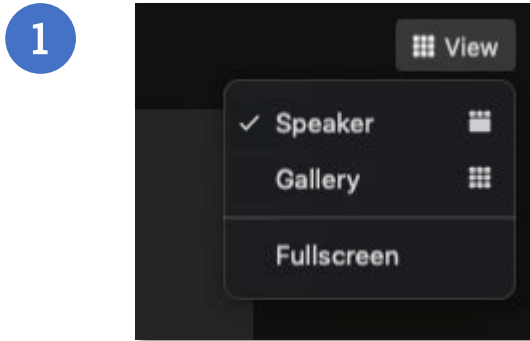


Isabelle Tersio

4th Year Medical Student
Geisel School of Medicine at Dartmouth (Pediatrics)

Instructions for the Session

- 1) Please **select “View” in the upper righthand corner and choose “Speaker” view** from the dropdown menu.
- 2) Speakers will be available for questions after the main program; **send via chat to “Q&A”**.



Thank You!

Thank you to our presenters and attendees for participating today.

- Thanks also to the Kern Family Trust and Kern Family Foundation whose investment makes this series possible.
- The KNN extends gratitude to Aurora WDC for production assistance.

CONTACT US

Phone: 414-955-8075

Email: knn@mcw.edu

Twitter: @KernNetwork

Web: knncaringcharactermedicine.org



JOIN THE DISCUSSION



KNN Online Community

community.knncaringcharactermedicine.org

