



THE MEDICAL PROFESSION THROUGH THE LENS OF HUMAN FLOURISHING

Civic Responsibility: Healthcare and Democracy

ONLINE | TUESDAY, OCTOBER 26 | 4–5 PM CT

LEARNING OBJECTIVES

- Discuss roles healthcare learners and professionals can/ should have in U.S. civic life as it relates to healthcare.
- Consider whether health professionals should play a role in protecting rights beyond healthcare for those who reside in the U.S.
- Explore ways in which concepts of civic character and engagement apply to healthcare learners and professionals.

See pages 3–4 for Continuing Education info and registration instructions

Featuring:

Abdul El-Sayed, MD, DPhil

Towsley Foundation Policymaker in Residence
Gerald R. Ford School of Public Policy
Senior Fellow, FXB Center for Health & Human Rights



Jasmine Zapata, MD, MPH

Assistant Professor
Division of Neonatology and Newborn Nursery
Department of Pediatrics
UW School of Medicine and Public Health



Moderator:

Gregg Margolis, PhD

Director of Health Policy Fellowships
and Leadership Programs
National Academy of Medicine



ABOUT THE KNN

This discussion series is presented by the Kern National Network for Caring & Character in Medicine (KNN) through an investment from the Kern Family Trust and Kern Family Foundation. The mission of the KNN is to promote human flourishing through the profession of medicine. Founding member schools include:

- Dell Medical School at The University of Texas Austin
- Geisel School of Medicine at Dartmouth
- Mayo Clinic Alix School of Medicine
- Medical College of Wisconsin Medical School
- University of California San Francisco School of Medicine
- University of Wisconsin School of Medicine and Public Health
- Vanderbilt University School of Medicine

Register Today

<https://knnaringcharactermedicine.org/>



KERN NATIONAL NETWORK
FOR CARING & CHARACTER IN MEDICINE

FEATURED SPEAKERS



Abdul El-Sayed, MD, DPhil

Towsley Foundation Policymaker in Residence
Gerald R. Ford School of Public Policy
Senior Fellow, FXB Center for Health & Human Rights

Abdul El-Sayed is a physician, epidemiologist, educator, author, speaker and podcast host. He is a Towsley Foundation Policymaker in Residence at the University of Michigan Gerald R. Ford School of Public Policy and a Senior Fellow at the FXB Center for Health & Human Rights at the Harvard T.H. Chan School of Public Health, where he teaches at the intersection between public health, public policy and politics.

Dr. El-Sayed was the youngest health official in a major U.S. city when he was appointed Health Director in the city of Detroit, charged with rebuilding the city's health department. As a professor at Columbia University, he became an internationally recognized expert in health policy and health inequalities. He has 100+ peer-reviewed publications that have earned 2,000+ citations.

Jasmine Zapata is a double board-certified physician specializing in the fields of Pediatrics and Preventive Medicine. Dr. Zapata is an assistant professor at the University of Wisconsin School of Medicine and Public Health where she practices clinically in the newborn nursery and is involved in a variety of scholarly activities aimed at increasing diversity in medicine and promoting health equity.

She also currently serves as the Chief Medical Officer and State Epidemiologist for Community Health within the Bureau of Community Health Promotion at the Wisconsin Department of Health where she provides expert guidance for a variety of public health promotion, planning and policy efforts. In this role, she also serves as co-chair of the Governor's Health Equity Council Subcommittee on Power, Access, and Representation as well as co-chair of the Wisconsin Maternal Mortality Review Team.

Overall, she has many lived experiences that help her uniquely connect with the communities she serves and is well known for her infectious energy, passionate advocacy and heart for service. Her ultimate mission in life is to "heal, uplift and inspire."



Jasmine Zapata, MD, MPH

Assistant Professor
Division of Neonatology and Newborn Nursery
Department of Pediatrics
UW School of Medicine and Public Health



Gregg Margolis, PhD

Director of Health Policy Fellowships
and Leadership Programs
National Academy of Medicine

Gregg Margolis leads six NAM national health policy fellowship and scholar programs, including the RWJF Policy Fellows Program, with a mission of building health policy leadership and expertise for the future.

Dr. Margolis served as the Director of the Division of Health System Policy at the United States Department of Health and Human Services. In 2009–2010, he was the first paramedic to be an RWJF Health Policy Fellow, where he served as a health staffer in the U.S. Senate.

Dr. Margolis holds a PhD in administrative and policy studies from the University of Pittsburgh and has more than 20 years of clinical experience as a field and flight paramedic. He is the author of dozens of publications and a frequent speaker on emergency medicine, disasters/public health emergency preparedness and health policy.



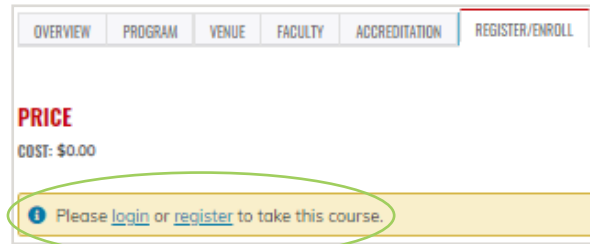
REGISTRATION INSTRUCTIONS

Thank you to KNN partner school UW-Madison for hosting registration!

Please note: Registration is a two-part process. You will need to sign in or create an account with UW-Madison, then select “Begin” to start your registration.

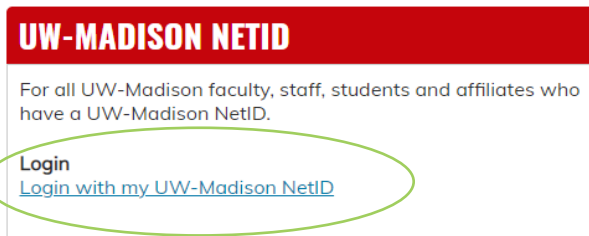
1) Click [here](#) to register.

2) Under the “Register/Enroll” tab, select “login” or “register.”

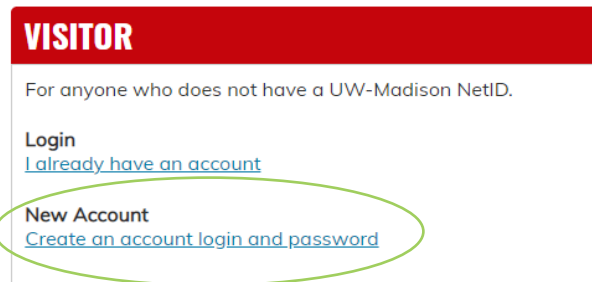


3) Choose the appropriate option:

If you have a UW-Madison NetID:
Select “Login with my UW-Madison NetID”



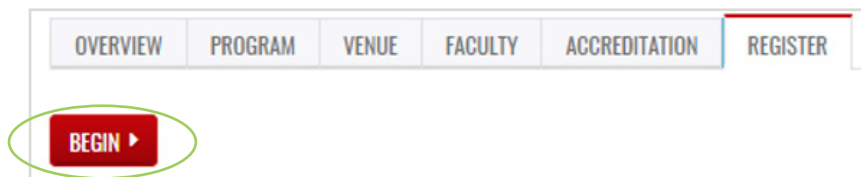
If you do not have a UW-Madison Net ID:
Select “Create an account login and password”



4) Follow any prompts to complete/update your profile information to create an account.

Questions on setting up your profile? Please see [this FAQ](#) from UW-Madison.

5) Once your account is created, select “Begin” to register for the event. You will receive an email confirmation to indicate your registration has been processed. If you do not, please contact us.



**You must select “Begin”
to register successfully
for the event**

Questions on registration? Please contact help@icep.wisc.edu



CONTINUING EDUCATION

ACCREDITATION STATEMENT



JOINTLY ACCREDITED PROVIDER™
INTERPROFESSIONAL CONTINUING EDUCATION

In support of improving patient care, this activity has been planned and implemented by the University of Wisconsin–Madison Interprofessional Continuing Education Partnership (ICEP) and the Kern National Network for Caring & Character in Medicine, Medical College of Wisconsin. The University of Wisconsin–Madison ICEP is jointly accredited by the Accreditation Council for Continuing Medical Education (ACCME), the Accreditation Council for Pharmacy Education (ACPE), and the American Nurses Credentialing Center (ANCC), to provide continuing education for the healthcare team.

CREDIT DESIGNATION STATEMENTS

ACCREDITATION COUNCIL FOR PHARMACY EDUCATION (ACPE)

The University of Wisconsin–Madison ICEP designates this knowledge-based activity for a maximum of 1.0 hour/0.1 CEUs of CPE credit. Credit will be provided to NABP CPE Monitor within 45 days after the activity completion.

Universal Activity Number (UAN) will be posted on the course page prior to the start of the event.

AMERICAN MEDICAL ASSOCIATION (AMA)

The University of Wisconsin–Madison ICEP designates this live activity for a maximum of 1.0 *AMA PRA Category 1 Credit™*. Physicians should claim only the credit commensurate with the extent of their participation in the activity.

AMERICAN NURSES CREDENTIALING CENTER (ANCC)

The University of Wisconsin–Madison ICEP designates this live activity for a maximum of 1.0 ANCC contact hour.

CONTINUING EDUCATION UNITS

The University of Wisconsin–Madison ICEP, as a member of the University Professional & Continuing Education Association (UPCEA), authorizes this program for 0.1 continuing education units (CEUs) or 1.0 hour.

SAVE THE DATE

Human Flourishing 2030

The KNN's next series will examine external influences affecting the future of human flourishing in the next decade—from social determinants to planetary health. Hold the date for the following **Tuesdays at 4 pm CT:**

- January 25, 2022
- April 26, 2022
- August 23, 2022
- October 25, 2022

Questions?
Email us at knn@mcw.edu



KERN NATIONAL NETWORK
FOR CARING & CHARACTER IN MEDICINE