



THE MEDICAL PROFESSION THROUGH THE LENS OF HUMAN FLOURISHING

Seeking **Strength** in Times of **Crisis**

LEARNING OBJECTIVES

- Discuss how **pathways to flourishing** can help health professions learners, practitioners and organizations find strength and resilience during crisis.
- Describe the types of **well-being and mental health resources** necessary to sustain strength and resilience for health professions learners, practitioners and patients, during and after crisis.
- Discuss how expectations for caring, committed and courageous individuals should be balanced with **multifaceted institutional and societal support** in attaining strength and resilience.

See pg. 3-4 for Continuing Education info and registration instructions

ABOUT THE KNN

This discussion series is presented by the Kern National Network for Caring & Character in Medicine (KNN) through an investment from the Kern Family Trust and Kern Family Foundation. The mission of the KNN is to promote human flourishing through the profession of medicine. Partner schools include:

- Dell Medical School at The University of Texas Austin
- Geisel School of Medicine at Dartmouth
- Mayo Clinic Alix School of Medicine
- Medical College of Wisconsin Medical School
- University of California San Francisco School of Medicine
- University of Wisconsin School of Medicine and Public Health
- Vanderbilt University School of Medicine

ONLINE | TUESDAY, APRIL 27 | 4-5:15 PM CT

Featuring:

Krista Gregory, MDiv, BCC

Founder and Director, Center for Resiliency
Dell Children's Medical Center



Daniela Lamas, MD

Pulmonary and Critical Care Physician
Brigham and Women's Hospital



John Tarpley, MD, FWACS, FACS

Professor Emeritus, Surgery and Anesthesiology
Vanderbilt University Medical Center
Professor of Surgery and Head of Department
University of Botswana



Moderator:

Chris Stawski, PhD

Senior Fellow, Kern Family Foundation



Register Today



FEATURED SPEAKERS



Krista Gregory, MDiv, BCC

Founder and Director, Center for Resiliency
Dell Children's Medical Center

Krista Gregory is the founder and director of the Center for Resiliency at Dell Children's Medical Center of Central Texas. The center was established with the belief that the language and structure of medicine needs to transform to provide a sustainable setting for practitioners to counter burnout and increase personal and professional fulfillment.

Rev. Gregory is a board-certified chaplain who has worked in the healthcare field for more than 25 years with physicians, residents and healthcare professionals, both in adult and pediatric facilities. She is a trained teacher in mindful self-compassion and co-designer of the teacher training for the course "Self-Compassion for Healthcare Communities" with the Center for Mindful Self-Compassion.

Daniela Lamas is a pulmonary and critical care physician at Brigham and Women's Hospital, instructor in medicine at Harvard Medical School and associate faculty at Ariadne Labs, where she works with the Serious Illness Care Program. She is also working on COVID-19 recovery as co-director of the Brigham and Women's COVID Recovery Center.

Dr. Lamas' clinical and research areas of focus are in long-term critical care survivorship, palliative care in the ICU and decision-making surrounding chronic critical illness. She frequently writes about loneliness, caregiving and the unseen stories of critical care.



Daniela Lamas, MD

Pulmonary and Critical Care Physician
Brigham and Women's Hospital



John Tarpley, MD, FWACS, FACS

Professor Emeritus, Surgery and Anesthesiology
Vanderbilt University Medical Center
Professor of Surgery and Head of Department
University of Botswana

After completing his general surgery residency, John "tarp" Tarpley committed himself to surgical education for an underserved population and spent ~15 years in southwest Nigeria directing house-officer training at the Baptist Medical Centre, Ogbomosho, and as an associate lecturer, UCH, Ibadan, Nigeria.

In 1993, he returned to Nashville to practice surgery at the VA hospital and joined the Vanderbilt faculty. He received teaching awards locally and nationally and was designated a Master Clinical Teacher at Vanderbilt. The Society for Black Academic Surgeons elected him an honorary member in 2005 in recognition of his service for underrepresented minorities.

Since retiring from Vanderbilt in 2016, Dr. Tarpley has worked in Kenya, Rwanda and Botswana, where he serves as head of the surgery department for the University of Botswana.

Chris Stawski is Senior Fellow at the Kern Family Foundation. He works to build relational networks and co-develop strategic directions to integrate the Foundation's focus areas in character, entrepreneurial mindset and creating value for others. He is also Affiliate Assistant Professor at the Kern Institute for the Transformation of Medical Education at the Medical College of Wisconsin, where he works to integrate character into medical education.

He is effective in working with opinion-leading experts, emerging talent and colleagues in philanthropy, nonprofit organizations and academia who have the potential to advance breakthrough ideas to transform culture, knowledge and society.



Chris Stawski, PhD

Senior Fellow, Kern Family Foundation



KERN NATIONAL NETWORK
FOR CARING & CHARACTER IN MEDICINE

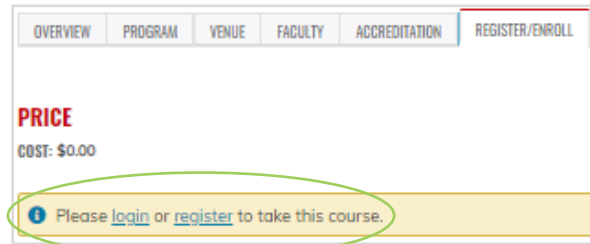
REGISTRATION INSTRUCTIONS

Thank you to KNN partner school UW-Madison for hosting registration!

Please note: Registration is a two-part process. You will need to sign in or create an account with UW-Madison, then select “Begin” to start your registration.

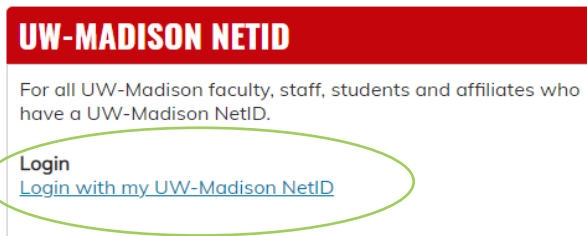
1) Click [here](#) to register.

2) Under the “Register/Enroll” tab, select “login” or “register.”

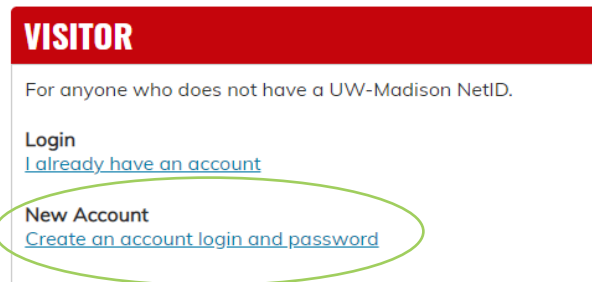


3) Choose the appropriate option:

If you have a UW-Madison NetID:
Select “Login with my UW-Madison NetID”



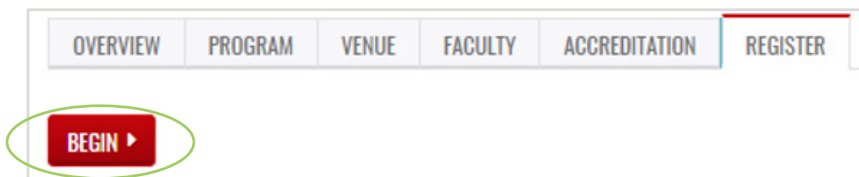
If you do not have a UW-Madison Net ID:
Select “Create an account login and password”



4) Follow any prompts to complete/update your profile information to create an account.

Questions on setting up your profile? Please see [this FAQ](#) from UW-Madison.

5) Once your account is created, select “Begin” to register for the event. You will receive an email confirmation to indicate your registration has been processed.



**You must select “Begin”
to register successfully
for the event**

Questions on registration? Please contact help@icep.wisc.edu



CONTINUING EDUCATION

ACCREDITATION STATEMENT



JOINTLY ACCREDITED PROVIDER™
INTERPROFESSIONAL CONTINUING EDUCATION

In support of improving patient care, this activity has been planned and implemented by the University of Wisconsin–Madison Interprofessional Continuing Education Partnership (ICEP) and the Kern National Network for Caring and Character in Medicine, Medical College of Wisconsin. The University of Wisconsin–Madison ICEP is jointly accredited by the Accreditation Council for Continuing Medical Education (ACCME), the Accreditation Council for Pharmacy Education (ACPE), and the American Nurses Credentialing Center (ANCC), to provide continuing education for the healthcare team.

CREDIT DESIGNATION STATEMENTS

ACCREDITATION COUNCIL FOR PHARMACY EDUCATION (ACPE)

The University of Wisconsin–Madison ICEP designates this knowledge-based activity for a maximum of 1.0 hour/0.1 CEUs of CPE credit. Credit will be provided to NABP CPE Monitor within 60 days after the activity completion.

Universal Activity Number (UAN): JA0000358-9999-21-094-L04-P

AMERICAN MEDICAL ASSOCIATION (AMA)

The University of Wisconsin–Madison ICEP designates this live activity for a maximum of 1.0 *AMA PRA Category 1 Credit™*. Physicians should claim only the credit commensurate with the extent of their participation in the activity.

AMERICAN NURSES CREDENTIALING CENTER (ANCC)

The University of Wisconsin–Madison ICEP designates this live activity for a maximum of 1.0 ANCC contact hour.

Iowa Board of Nursing accepts ANCC contact hours for [nursing continuing education requirements](#).

CONTINUING EDUCATION UNITS

The University of Wisconsin–Madison ICEP, as a member of the University Professional & Continuing Education Association (UPCEA), authorizes this program for 0.1 continuing education units (CEUs) or 1.0 hour.

SAVE THE DATE

Social Justice, Health Equity and Human Flourishing: Are We All Included?

Tuesday, August 3, 2021 4 PM CT

Civic Responsibility: Medicine and Democracy

Tuesday, October 26, 2021 4 PM CT

Questions? Email us at knn@mcw.edu

Thank you to our partners at Aurora WDC for production assistance.



KERN NATIONAL NETWORK
FOR CARING & CHARACTER IN MEDICINE